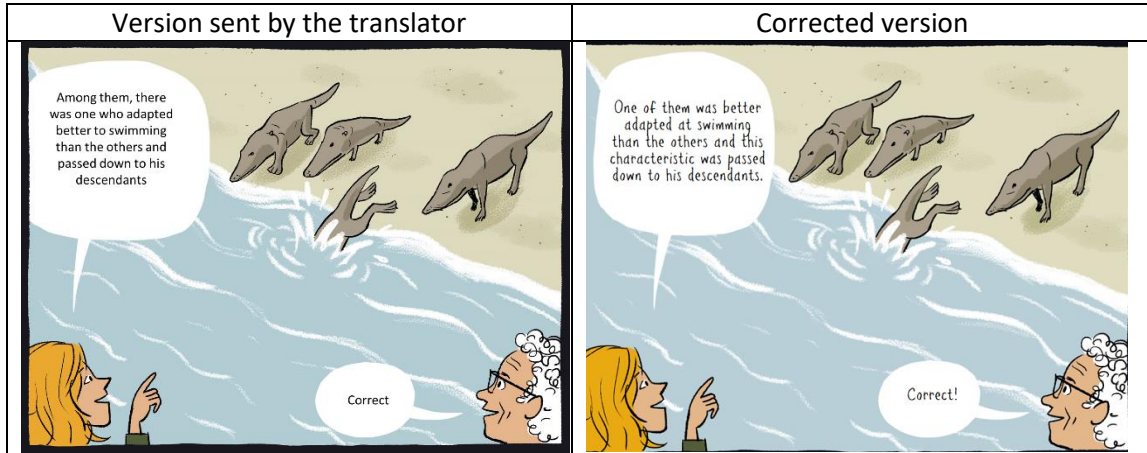


A Science Comic on Evolution Theory (worksheet example 1)

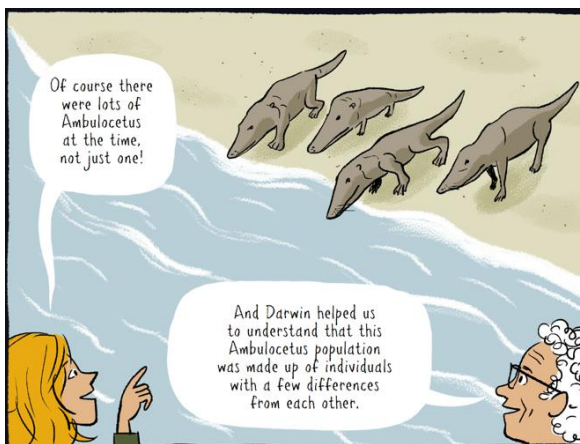
1. Our team had to make some corrections to the translation. Analyse and compare the initial and final versions of this image. Explain why it was necessary to correct the version sent by the translator.



© Bergey & Govin, Stimuli Eds, 2024.

Answer:

2. The first version of the image below had only one *Ambulocetus*. The teaching team felt it was important to add more individuals with different characteristics. What was the reason behind this request?



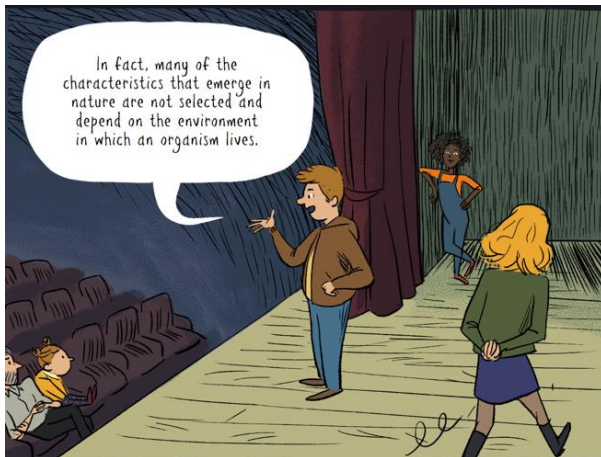
© Bergey & Govin, Stimuli Eds, 2024.

Answer:

3. Read again chapter 2. How do you explain the idea of natural selection?

Answer:

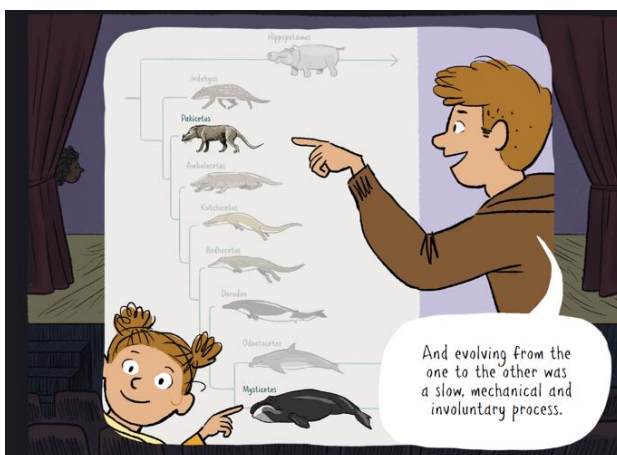
4. What is meant by "many of the features that emerge are not selected" on the image below? How do you explain that some characteristics are selected and others are not?



© Bergey & Govin, Stimuli Eds, 2024.

Answer:

5. What does the word "involuntary" in this image mean in the context of evolutionism?



© Bergey & Govin, Stimuli Eds, 2024.

Answer:

6. At the end of the story you have just read, the characters Tom, Diana and Tom's sister propose that you tell the story of Alice's descendants.



© Bergey & Govin, Stimuli Eds, 2024.



Based on what you have learned about NeoDarwinism, how would you explain the evolution of Alice's descendants in Wonderland?

Answer:

© Text: Bianor Valente, Cláudia Faria, Joana Torres (2024)

© Drawings: Bergey & Govin, Stimuli Eds, 2024.